



2026 KITCHEN
DESIGN AWARDS™

LOOKBOOK



RECOGNIZING THE TOP 20 OUTSTANDING PROJECTS BY DESIGNERS OF KITCHENS

The KCMA® Design Awards program recognizes outstanding kitchen designs by kitchen designers, interior designers, and architects practicing in the United States to promote public interest in cabinet design excellence. The competition focuses attention on the quality of the cabinet environments within kitchens, while highlighting the important role designers play in every community.



AN IMPORTANT MESSAGE FROM BETSY NATZ, CEO, KITCHEN CABINET MANUFACTURERS ASSOCIATION



I'm pleased to share the results of the **2026 KCMA Design Awards**, celebrating the exceptional work of designers, architects, builders, and remodelers who create inspiring spaces using cabinetry from members of the Kitchen Cabinet Manufacturers Association.

This year's competition once again showcased the remarkable creativity and skill across our industry. With 101 entries submitted, the range of projects reflected the evolving role of the kitchen as both the functional heart of the home and a central gathering space for everyday living and entertaining.

What stood out most to the judges was the extraordinary depth of the field. Many submissions demonstrated thoughtful planning, beautiful material selections, and exceptional craftsmanship. The level of design quality across the competition made the judging process both rigorous and rewarding.

While many kitchens were highly accomplished, the projects that rose to the top distinguished themselves through a deeper integration of architecture, spatial planning, materials, and functionality. These designs demonstrated how cabinetry can shape not only the efficiency of a kitchen, but also the character and experience of the space itself.

I'm proud to recognize this year's winners featured in the **Look Book**:

- **First Place:** Lakeside Retreat, Candace Rudd, Two30Nine by Décor using Decor Cabinets
- **Second Place:** French Hickory, Nar Bustamante, Nar Design Group using Crystal Cabinet
- **Third Place:** Historic Charm, Modern Heart, Carissa Trygstad, Showplace Cabinetry Design Center SD using Showplace Cabinetry

Each of these projects exemplifies the creativity, craftsmanship, and thoughtful design that define excellence in kitchen design. At the same time, the strength of this year's competition reflects the impressive talent represented throughout the entire field of submissions.

I invite you to explore the **2026 KCMA Design Awards Look Book**, where you'll discover the top 20 entries along with the innovative thinking behind each project. Together they provide a compelling snapshot of how designers are pushing the boundaries of function, aesthetics, and craftsmanship in today's kitchens.

This program would not be possible without our distinguished panel of judges, who carefully evaluated each entry based on **Innovation, Aesthetics, Functionality, Durability, Utility, Emotional Quotient (EQ), and Overall Impact**. Their expertise and thoughtful deliberation ensure that the KCMA Design Awards continue to reflect the highest standards of excellence in our industry.

The KCMA Design Awards were created to shine **a spotlight on the remarkable work being done across the kitchen design community**—providing a platform for designers to share their creativity, gain recognition from their peers, and inspire the next generation of projects.

To all who entered, thank you for your passion, dedication, and creativity. Your work continues to elevate the standard of kitchen design, and we look forward to seeing what you bring to next year's competition.

Enjoy the Look Book.

Betsy Natz
Chief Executive Officer
Kitchen Cabinet Manufacturers Association

A handwritten signature in blue ink that reads "Betsy M. Natz".



To see the digital edition of the KCMA Design Awards 2026 Look Book containing all the participants in this year's awards competition, scan this QR code and enjoy!



TABLE OF CONTENTS



CANDACE RUDD



CANDACE RUDD



WENDY PRATHER



NAR BUSTAMANTE



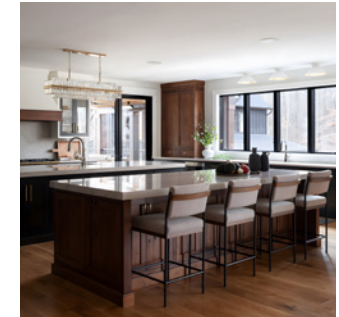
TRISHA MOYNIHAN



KARA HAYES



CARISSA TRYGSTAD



JULIE HOFFMANN



OLIVIA HORINE

TABLE OF CONTENTS

PAGE
24



TRISHA MOYNIHAN

PAGE
32



JOJO WONG

PAGE
40



ANDREW DONALDSON

PAGE
26



JULIE HOFFMANN

PAGE
34



MATTHEW DESANCTIS

PAGE
42



ANDREW DEMPSEY

PAGE
28



KARA BLOOMFELDT

PAGE
36



RAMI DEBBAS

PAGE
44



VICKI WAKER

PAGE
30



NAR BUSTAMANTE

PAGE
38



KRISTI BROWN

1

TWO30NINE BY DECOR

CANDACE RUDD

This kitchen balances contemporary design with long-term functionality. Dark cabinetry adds depth while warm wood tones bring natural warmth, and light surfaces enhance brightness. An efficient layout improves workflow, while full-height cabinetry and integrated appliances maximize storage and maintain a clean, modern look for everyday living and entertaining.



KCMA Certification
ESP

Cabinets made by
Decor Cabinets

Cost of Remodel
\$100,000+

Approx. cabinetry cost
\$60,000 - \$70,000

Approx. remodel square footage
350 sq ft

Cabinet Color(s)
Charcoal, Light Natural Wood

Kitchen Layout
U-Shaped Kitchen

Design Style
Contemporary/Modern



Judge's comment:

"Project reflects careful planning, strong material coordination, and a cohesive architectural vision."



BEFORE



COUNTERTOPS

Primary Countertop Manufacturer
Laminam

Primary Countertop Material
Calacatta Michelangelo

Secondary Countertop Manufacturer
Caesarstone

Secondary Countertop Material
Stoneburst

APPLIANCES

Stove/Range
Wolf

Refrigerator
Sub-Zero

Microwave
Wolf

Dishwasher
Cove

EXTRAS

Lighting
Hafele integrated LED lighting, installed directly into the cabinetry by Decor Cabinets

Cabinet Accessories
Trash Can Pull-Out, Drawer Organizers, Cabinet Organizers, Vertical Spice Rack, Corner Organizers, Servo-drive lift-up and trash cabinets, custom hood

NAR DESIGN GROUP

NAR BUSTAMANTE

This French-inspired kitchen combines timeless charm with a modern sensibility. Custom hickory cabinetry blends flush inset and frameless designs for cleaner lines, while rustic elements like exposed beams and metal island countertops add warmth. Wraparound cabinetry and a tall hutch connect the pantry and kitchen, maximizing flow and storage.



KCMA Certification
ESP

Cabinets made by
Crystal Cabinet Works

Cost of Remodel
\$100,000+

Approx. cabinetry cost
\$100,000+

Approx. remodel square footage
330 sq ft

Cabinet Color(s)
Medium Natural Wood

Kitchen Layout
U-Shaped Kitchen

Design Style
French



Judge's comment:

"Refined and highly cohesive kitchen design."



BEFORE



COUNTERTOPS

Primary Countertop Manufacturer
Neolith

Primary Countertop Material
Calacatta Ultra Soft

Secondary Countertop Manufacturer
Grothouse

Secondary Countertop Material
Anvil Palladium

APPLIANCES

Stove/Range
Thermador

Refrigerator
Miele

Microwave
Thermador

Dishwasher
Thermador

EXTRAS

Fixtures
The Galley

Lighting
Owner provided

Cabinet accessories
Trash Can Pull-Out, Drawer Organizers, Cabinet Organizers

SHOWPLACE CABINETRY DESIGN CENTER

CARISSA TRYGSTAD

The Carpenter House – an 1891 Queen Anne in the Cathedral District – deserved a kitchen that honored its past while supporting modern living. Thoughtful details and timeless materials guided every decision. The cabinetry color, Sherwin-Williams Sleepy Blue, was inspired by the dining room’s historic wall covering. Old soul, new chapter.



KCMA Certification
ESP & A161.1 Quality

Cabinets made by
Showplace Cabinetry

Cost of Remodel
\$100,000+

Approx. cabinetry cost
\$80,000 - \$90,000

Approx. remodel square footage
400 sq ft

Cabinet Color(s)
Blue

Kitchen Layout
L-Shaped Kitchen

Design Style
Traditional



BEFORE



Judge's comment:

"Every aspect of this design is handled skillfully."

COUNTERTOPS

Primary Countertop Material
Quartz

APPLIANCES

Stove/Range
Wolf (IR365TE)/Ventahood

Refrigerator
Viking (VCSB5421SS), Wine Frig.-Wine Enthusiast

Oven
Wolf (IR365TE), Warming Drawers

Microwave
Amana (49AMA-70723414-6CEA30)

Dishwasher
Bosch - Panel Ready (SHV78CM3N)

EXTRAS

Fixtures
Kohler/Rohl

Lighting
Hudson Valley Lighting

Cabinet Accessories
Trash Can Pull-Out, Lazy Susan



TWO30NINE BY DECOR

CANDACE RUDD

This new-build reimagines the kitchen as a refined, high-performance living space where architectural detail and everyday functionality work in harmony. The design balances clean contemporary lines with warm materiality, creating an environment that feels elevated yet inviting.

KCMA Certification

ESP

Cabinets made by

Decor Cabinets

Cost of Remodel

\$100,000+

Approx. cabinetry cost

\$60,000 - \$70,000

Approx. remodel square footage

310 sq ft

Cabinet Color(s)

Charcoal, Light Natural Wood

Kitchen Layout

Galley Kitchen

Design Style

Contemporary/Modern





BEFORE



Judge's comment:

"Project demonstrates strong restraint, careful detailing, and a refined contemporary aesthetic."

COUNTERTOPS

Primary Countertop Manufacturer
Corian

Primary Countertop Material
Concrete

Secondary Countertop Material
Natural Marble

APPLIANCES

Stove/Range
Wolf

Refrigerator
Sub-Zero

Oven
Wolf

Microwave
Wolf

Dishwasher
Bosch

EXTRAS

Lighting
Integrated LED lighting from Hafele, supplied and installed by Decor Cabinets

Cabinet Accessories
Trash Can Pull-Out, Drawer Organizers, Cabinet Organizers, Hawa bifold pocket door system, vertical tray dividers



AUTHENTIC KITCHEN & DESIGN

TRISHA MOYNIHAN

The original kitchen was small, closed off, and inefficient – completely mismatched to the lifestyle of this Italian family, who love to cook and host gatherings. The limited space and poor layout made it difficult for multiple people to move around comfortably, leaving little room for the warmth and togetherness that define their way of living.



KCMA Certification
ESP

Cabinets made by
Crystal Cabinet Works

Cost of Remodel
\$100,000+

Approx. cabinetry cost
\$40,000 - \$50,000

Approx. remodel square footage
266 sq ft

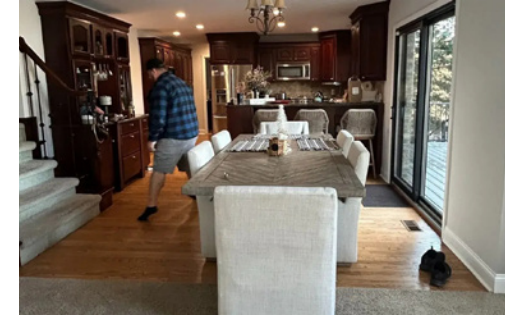
Cabinet Color(s)
Brown, White/Off-white

Kitchen Layout
L-Shaped Kitchen

Design Style
Transitional



BEFORE



Judge's comment:

"Rustic and modern at the same time."

COUNTERTOPS

Primary Countertop Manufacturer
Pental Quartz

Primary Countertop Material
Quartz

APPLIANCES

Stove/Range
Sub-Zero, Wolf, and Cove

Refrigerator
Sub-Zero, Wolf, and Cove

Oven
Sub-Zero, Wolf, and Cove

Dishwasher
Sub-Zero, Wolf, and Cove

EXTRAS

Fixtures
Beverage Fridge and Coffee Maker:
Sub-Zero, Wolf, and Cove

Lighting
Undershef Lighting: Hafele America

Cabinet Accessories
Trash Can Pull-Out, Lazy Susan,
Utensil pullout, tray divider

J&L INTERIORS, LLC

JULIE HOFFMANN

The primary challenge of this renovation was creating a sophisticated kitchen design that catered to their love of entertaining and ensuring accessibility for their son. The result is a thoughtfully curated, layered rustic chic design that now serves as the heart of the home. Accessibility was a foundational requirement in this design.



Cabinets made by
Mullwoods

Cost of Remodel
\$100,000+

Approx. cabinetry cost
\$60,000 - \$70,000

Approx. remodel square footage
550 sq ft

Cabinet Color(s)
Black, Dark Natural Wood,
White/Off-white

Kitchen Layout
U-Shaped

Design Style
Rustic Chic



Judge's comment:

"This is so tastefully laid out."



BEFORE



COUNTERTOPS

Primary Countertop Manufacturer
Erin's Marble & Granite

Primary Countertop Material
Winter Storm Quartzite

APPLIANCES

Stove/Range
Cornufe

Refrigerator
Sub-Zero

Oven
Wolf

Microwave
Wolf

Dishwasher
Cove

EXTRAS

Fixtures
Top Knobs Hardware

Lighting
Island and Over Sink (Elk Lighting), Coffee Bar (Alora)

Cabinet accessories
Trash Can Pull-Out, Drawer/Cabinet Organizers, Utility Tip Out Trays, Retractable doors under the sink, Custom table top Pull-Out, Spice lay down, Double silver ware tray, utensil organizer.

DUNN LUMBER

WENDY PRATHER

Tighter spaces, taller ceilings, and a need for storage, as well as maintaining the stunning view of the lake, made the design especially tricky. The homeowner wanted a fresh, clean look that also brought in some of the wood look to tie into the Pacific Northwest vibe.



KCMA Certification
ESP & A161.1 Quality

Cabinets made by
Bellmont Cabinet Company

Cost of Remodel
\$100,000+

Approx. cabinetry cost
\$50,000 - \$60,000

Cabinet Color(s)
Dark Natural Wood,
White/Off-white

Kitchen Layout
L-Shaped

Design Style
Contemporary/modern



BEFORE



Judge's comment:

"Achieves a refined and cohesive composition that elevates both the functionality and character of the kitchen."

COUNTERTOPS

Primary Countertop Manufacturer
Stratus

Primary Countertop Material
Quartz

APPLIANCES

Stove/Range
Thermador

Refrigerator
Sub-Zero

Oven
La Cornue

Dishwasher
Miele

EXTRAS

Cabinet Accessories
Trash Can Pull-Out, Corner Organizers, Espresso Cabinet with pocket doors, Tip-on drawers and doors in peninsula



MELTON DESIGN BUILD

KARA HAYES

The existing area was dark with insufficient lighting, oxidized knotty alder wood, outdated stone columns and dark painted walls. The double islands isolated work zones and created multiple walkways. It was also time to update existing cabinetry. What's more, the new design needed to maximize the existing footprint without moving structural walls or soffits.



KCMA Certification
ESP

Cabinets made by
W. W. Wood

Cost of Remodel
\$100,000+

Approx. cabinetry cost
\$30,000 - \$40,000

Approx. remodel square footage
330 sq ft

Cabinet Color(s)
Dark Natural Wood,
White/Off-white

Kitchen Layout
L-Shaped

Design Style
Transitional



Judge's comment:

"Refined and thoughtfully executed design."



BEFORE



COUNTERTOPS

Primary Countertop Manufacturer
Architectural Surfaces

Primary Countertop Material
Honed Quartzite

APPLIANCES

Stove/Range
Wolf

Refrigerator
Sub-Zero

Oven
Wolf

Dishwasher
Miele

EXTRAS

Fixtures
Bocchi Contempo White Fireclay Sink, Kohler Edalyn Faucet/Purist Soap Dispenser/Air Switch, InSinkerator Disposal

Lighting
Imagine More lighting design: Includes Visual Comfort island pendantst, adjustable recessed LEDs, dimmable tape lighting for toe-kicks, under cabinets, behind glass doors.

Cabinet Accessories
Trash Can Pull-Out, Drawer Organizers, Cabinet Organizers, Keyboard tray and pocket doors for the new desk.

OLIVIA HORINE DESIGN

OLIVIA HORINE

The original kitchen felt confined, defined by an oversized peninsula that separated it from the adjacent living space and limited both flow and functionality. Although it offered seating, it lacked comfort and failed to support the homeowners' cooking and entertaining needs.



KCMA Certification

A161.1 Quality

Cabinets made by

Frontier Cabinet & Door

Cost of Remodel

\$75,000 - \$100,000

Approx. cabinetry cost

\$20,000 - \$30,000

Cabinet Color(s)

Dark Natural Wood,
Light Natural Wood

Kitchen Layout

U-Shaped Kitchen

Design Style

Contemporary/Modern



BEFORE



COUNTERTOPS

Primary Countertop Manufacturer
ABK

Primary Countertop Material
Porcelain Slab

APPLIANCES

Stove/Range
Thermador

Refrigerator
Thermador

Oven
Thermador

Microwave
Thermador

Dishwasher
Thermador

EXTRAS

Fixtures
Coffee Maker: Thermador, Faucet: Kraus,
Main Sink: Delta Workstation Granite, Island
Sink: Blanco Liven, Water Filtration Faucet:
Delta; Water Dispenser Beverage Faucet,
Pot Filler: Delta Champagne Bronze

Lighting
Island Pendant Lights (Nuvo Lighting Eaves
5" Wide Mini Pendant Model # 60/6712)

Cabinet Accessories
Trash Can Pull-Out, Drawer/Cabinet/
Corner Organizers

Judge's comment:

"Thoughtfully styled."



AUTHENTIC KITCHEN & DESIGN

TRISHA MOYNIHAN

The original kitchen layout presented several functional and aesthetic challenges. The homeowners were unable to open the fridge doors due to the refrigerator being tucked into a corner, while also preventing use of the pantry cabinet at all because the fridge would block it - an everyday frustration for the homeowners.



KCMA Certification
ESP

Cabinets made by
Crystal Cabinet Works

Cost of Remodel
\$100,000+

Approx. cabinetry cost
\$40,000 - \$50,000

Approx. remodel square footage
378 sq ft

Cabinet Color(s)
Black, Brown, Medium Natural Wood

Kitchen Layout
L-Shaped

Design Style
Transitional



BEFORE



Judge's comment:

"Simple and beautiful!"

COUNTERTOPS

Primary Countertop Manufacturer
Pental Quartz

Primary Countertop Material
Quartz

APPLIANCES

Stove/Range
World Copper Smith (for the hood)

Refrigerator
Sub-Zero, Wolf, and Cove

Oven
Sub-Zero, Wolf, and Cove

Microwave
Sharp Home USA

Dishwasher
Sub-Zero, Wolf, and Cove

EXTRAS

Cabinet Accessories
Drawer Organizers, Lazy Susan, Pull-out drawer, towel holder in a cabinet, drawer peg organizer, rollout shelf, tray divider, utensil organizer



J&L INTERIORS

JULIE HOFFMANN

This beautiful kitchen transformation blends timeless elegance with fresh, inviting character full of functionality and organization. The previous kitchen was dark with an oddly shaped island that included an outdated bar top.



Cabinets made by
Mullwoods

Cost of Remodel
\$100,000+

Approx. cabinetry cost
\$90,000 - \$100,000

Approx. remodel square footage
280 sq ft

Cabinet Color(s)
Blue, Cream

Kitchen Layout
L-Shaped Kitchen

Design Style
Traditional



Judge's comment:

"Design achieves a gracious and timeless aesthetic with thoughtful detailing and strong functional planning."

BEFORE



COUNTERTOPS

Primary Countertop Manufacturer
United Marble and Granite

Primary Countertop Material
Calacatta Capri

APPLIANCES

Stove/Range
Cornufe

Refrigerator
Sub-Zero

Oven
Wolf

Microwave
Wolf

Dishwasher
Cove

EXTRAS

Fixtures
Top Knobs

Lighting
Crystorama

Cabinet Accessories
Trash Can Pull-Out, Drawer/Cabinet Organizers, Range Pull-Out cabinets, Paper Towel Holder, Knife Block, Tray cabinet, Bread Box, Lay down spice, Roll Outs, K Cup Organizer



LINKED DESIGN GROUP

KARA BLOOMFELDT

This project was a full home gut and remodel. Two challenges we faced in the kitchen were different floor heights from the kitchen to the family room, and a very long, narrow kitchen. These two difficulties also caused a very narrow walkway into the family room.

KCMA Certification
ESP & A161.1 Quality

Cabinets made by
Canyon Creek Cabinet Co.

Cost of Remodel
\$100,000+

Approx. cabinetry cost
\$30,000 - \$40,000

Approx. remodel square footage
450 sq ft

Cabinet Color(s)
Brown, Green, TSS Medium Wood

Kitchen Layout
U-Shaped

Design Style
Contemporary/Modern





BEFORE



Judge's comment:

"Well-resolved design that successfully combines architectural thinking, material richness, and functional planning."

COUNTERTOPS

Primary Countertop Manufacturer
Silestone

Primary Countertop Material
Coral Clay Quartz

APPLIANCES

Stove/Range
Thermador

Refrigerator
Thermador

Oven
Thermador

Microwave
Sharp

Dishwasher
Thermador

EXTRAS

Fixtures
Delta Trinsic Instant Hot Water Dispenser
Delta Trinsic Single Handle Pull-Down

Lighting
Currey and Company - Earthshine Pendant
Currey and Company - Maximus Bronze Chandelier

Cabinet Accessories
Trash Can Pull-Out, Drawer Organizers, Tall cabinet modified for electrical storage



NAR DESIGN GROUP

NAR BUSTAMANTE

As a busy family with young kids, pets, an active lifestyle and frequent entertaining, high function and flow with ample storage and durability were critical features. The clients desired a sophisticated, restaurant-inspired feeling which guided the design, with glass doors into the dining room for an elevated experience.



KCMA Certification
ESP

Cabinets made by
Crystal Cabinet Works

Cost of Remodel
\$100,000+

Approx. cabinetry cost
\$100,000+

Approx. remodel square footage
661 sq ft

Cabinet Color(s)
Light Natural Wood,
White/Off-white

Kitchen Layout
L-Shaped Kitchen

Design Style
Contemporary/Modern



BEFORE



COUNTERTOPS

Primary Countertop Manufacturer
Dekton

Primary Countertop Material
Rem

Secondary Countertop Manufacturer
Dekton

Secondary Countertop Material
Uyuni

APPLIANCES

Stove/Range
Wolf

Refrigerator
Sub-Zero

Oven
Wolf

Microwave
Sharp

Dishwasher
Cove & Fisher & Paykel

EXTRAS

Fixtures
The Galley

Lighting
Hudson Valley Lighting

Cabinet Accessories
Trash Can Pull-Out, Drawer & Cabinet Organizers, Non Slip Mats, Docking



Judge's comment:

"Sophisticated and beautifully executed transformation that balances functionality, elegance, and architectural clarity."

TEXAS WOODEN SOLUTIONS (DBA LETMOBEL)

JOJO WONG

This project encompassed a complete transformation of multiple spaces, taking a traditional residence and elevating it into a modern, sophisticated, and highly functional home. The challenge was to update classic interiors with ornate details into a contemporary design that exudes elegance and innovation while maintaining warmth.



KCMA Certification

A161.1 Quality

Cabinets made by

Letmobel

Cost of Remodel

\$100,000+

Approx. cabinetry cost

\$40,000 - \$50,000

Approx. remodel square footage

242 sq ft

Cabinet Color(s)

Black, Gray, Light Natural Wood

Kitchen Layout

L-Shaped, Island

Design Style

Contemporary/Modern

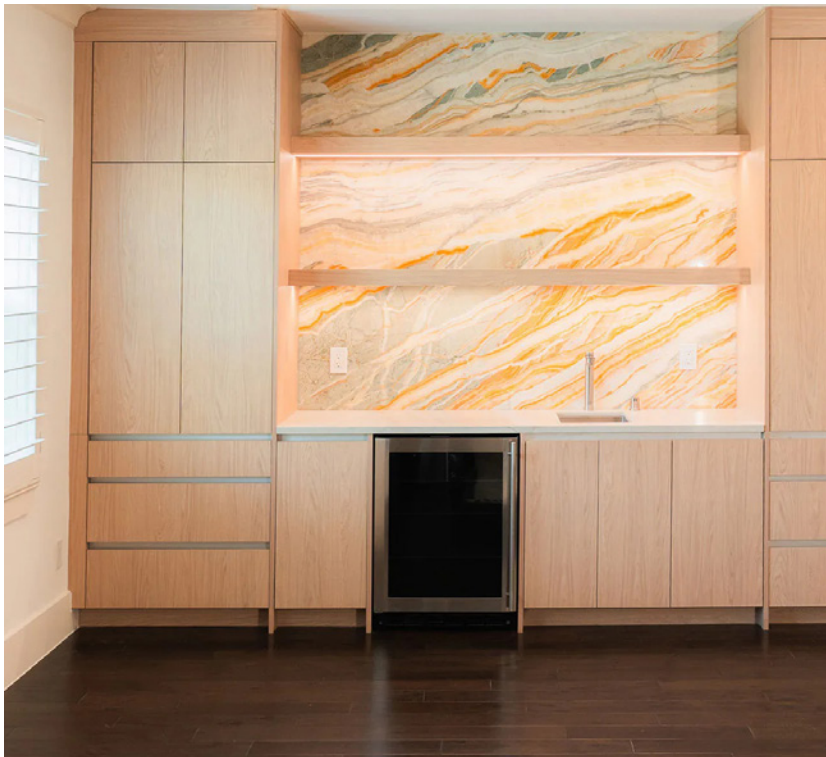


BEFORE



Judge's comment:

"Successfully transforms a traditional kitchen into a contemporary space."



APPLIANCES

Stove/Range
Zline

Refrigerator
GE

Oven
GE

Microwave
GE

Dishwasher
GE

EXTRAS

Fixtures
Faucets/Fixtures: Kohler

Lighting
Ferguson

Cabinet Accessories
Trash Can Pull-Out, Drawer Organizers

DESANCTIS HOMES

MATTHEW DESANCTIS

The home originally featured a small, enclosed kitchen that no longer fit the homeowners' lifestyle or vision. Rather than simply opening it up, the clients—who are well-traveled and design-forward—wanted to take a more unconventional approach by keeping the existing kitchen footprint and transforming it into a bar and lounge space.



Cabinets made by
Bridgewood Cabinetry

Cost of Remodel
\$100,000+

Approx. cabinetry cost
\$50,000 - \$60,000

Approx. remodel square footage
2,500 sq ft

Cabinet Color(s)
Beige, Light Natural Wood

Kitchen Layout
L-Shaped

Design Style
Transitional



BEFORE



COUNTERTOPS

Primary Countertop Manufacturer
Pompeii Quartz

Primary Countertop Material
Quartz

APPLIANCES

Stove/Range
ILVE nostalgia II

Refrigerator
Sub-Zero

Oven
ILVE nostalgia II

Microwave
Sharp Microwave Drawer

Dishwasher
Bosch

EXTRAS

Lighting
Large minimalist traditional/transitional pendant light. Metal surface finished with a painted coating giving a subtly textured, hand-applied look. 3000K recessed lights, 3000K LED tape lights in glass cabinets and under the upper cabinets

Cabinet Accessories
Trash Can Pull-Out, Drawer/Cabinet Organizers, Vertical Spice Rack

Judge's comment:

"Well-considered design that elevates the overall experience of the home beyond a typical kitchen remodel."



BELLEVUE CABINETS

RAMI DEBBAS

This remodel delivers a warm, modern kitchen defined by handleless precision, integrated appliances, and layered lighting—without visual clutter. The design challenge was to replace a dated, visually busy space with a minimalist, performance-driven kitchen that supports serious cooking and entertaining while feeling calm, bright, and connected to the home.

KCMA Certification
ESP & A161.1 Quality

Cabinets made by
Bellmont Cabinet Company

Cost of Remodel
\$100,000+

Approx. cabinetry cost
\$60,000 - \$70,000

Approx. remodel square footage
295 sq ft

Cabinet Color(s)
Walnut Bourbon Satin

Kitchen Layout
U-Shaped

Design Style
Contemporary/Modern





BEFORE



COUNTERTOPS

Primary Countertop Manufacturer
MSI Surfaces

Primary Countertop Material
Taj Mahal Brushed

APPLIANCES

Stove/Range
Wolf

Refrigerator
Sub-Zero

Oven
Wolf

Microwave
Wolf

Dishwasher
Cove

EXTRAS

Fixtures
Sink (main): Kohler Prolific K-5540, Sink (prep/bar): Kohler Undertone Lyric K-3341, Faucet: Kallista Juxtapose P23174

Lighting
Cabinet /accent lighting: Häfele, Island lighting: Seattle Lighting

Cabinet Accessories
Trash Can Pull-Out, Drawer/Cabinet/ Corner, Vertical Spice Rack, Utility Tip Out Trays



Judge's comment:

"The details are so clean and very strong."

CRYSTAL REMODELING

KRISTI BROWN

Modern Fairway is a kitchen remodel on a golf course that transformed a compartmentalized floor plan and traditional kitchen into a sleek, tailored space focused on contrast, flow, and accessibility.

Cabinets made by
DeWils Fine Cabinetry

Cost of Remodel
\$100,000+

Approx. cabinetry cost
\$60,000 - \$70,000

Approx. remodel square footage
200 sq ft

Cabinet Color(s)
Black

Kitchen Layout
L-Shaped Kitchen

Design Style
Contemporary/Modern





BEFORE



Judge's comment:

"Clean and thoughtful transformation that successfully modernizes the kitchen."

COUNTERTOPS

Primary Countertop Manufacturer
MSI Surfaces

Primary Countertop Material
Quartzite

APPLIANCES

Stove/Range
Dacor

Refrigerator
Dacor

Oven
Dacor

Microwave
Dacor

Dishwasher
Dacor

EXTRAS

Cabinet Accessories
Trash Can Pull-Out,
Drawer/Cabinet/Corner Organizers

FUTURA INC.

ANDREW DONALDSON

The primary challenge of this Bozeman, MT historic district remodel centered on integrating the kitchen and a small mudroom located half a floor lower, requiring careful navigation of tight tolerances and disparate elevations.

KCMA Certification
ESP & A161.1 Quality

Cabinets made by
Cabinetry By Karman

Cost of Remodel
\$100,000+

Approx. cabinetry cost
\$50,000 - \$60,000

Approx. remodel square footage
65 sq ft

Cabinet Color(s)
Green

Kitchen Layout
Island

Design Style
Farmhouse





BEFORE



Judge's comment:

"Love the use of color on cabinets. It's playful yet sophisticated."

COUNTERTOPS

Primary Countertop Material
Quartz

APPLIANCES

Stove/Range
Fulgor Milano

Refrigerator
Fulgor Milano

Microwave
Fulgor Milano

Dishwasher
Breda

EXTRAS

Fixtures
Sink-Elka Double Bowl Farmhouse

Cabinet Accessories
Drawer/Cabinet Organizers, Paneled fully Built in fridge/freezer

IBK INC

ANDREW DEMPSEY

This kitchen remodel presented the challenge of transforming a standard layout into a highly customized, modern space while working within the constraints of stock Belmont cabinet components. The goal was to achieve a sleek, seamless design without the cost or lead time of full custom cabinetry.

KCMA Certification
ESP & A161.1 Quality

Cabinets made by
Bellmont Cabinet Company

Cost of Remodel
\$75,000 - \$100,000

Approx. cabinetry cost
\$20,000 - \$30,000

Approx. remodel square footage
350 sq ft

Cabinet Color(s)
Dark Natural Wood, Grieger, Red

Kitchen Layout
L-Shaped

Design Style
Contemporary/Modern





BEFORE



Judge's comment:

"Love the attention to detail."

COUNTERTOPS

Primary Countertop Manufacturer
Cambria

Primary Countertop Material
Quartz

APPLIANCES

Stove/Range
Sub-Zero/Wolf

Refrigerator
Sub-Zero/Wolf

Oven
Sub-Zero/Wolf

Microwave
Sub-Zero/Wolf

Dishwasher
Sub-Zero/Wolf

EXTRAS

Cabinet Accessories

Trash Can Pull-Out, Drawer/Cabinet/
Corner Organizers, Vertical Spice Rack



CABINET CREATIONS DESIGN GALLERY INC.

VICKI WAKER

The client's desire for a gathering spot that incorporated the kitchen, dining, and entertainment area was the driving factor for this project. Columns used in the 90's were removed for an open concept and gave the space a more multi-function purpose. Unifying elements from the ceiling detail to the floor brought this design to the finish line.



Cabinets made by
Bridgewood Cabinetry

Cost of Remodel
\$100,000+

Approx. cabinetry cost
\$50,000 - \$60,000

Approx. remodel square footage
750 sq ft

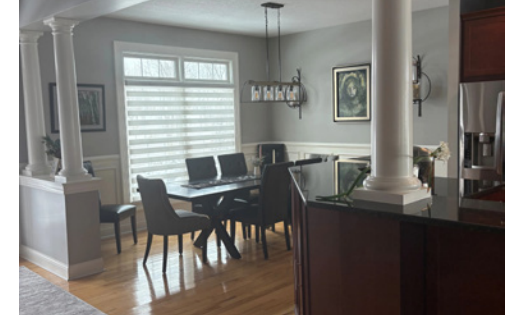
Cabinet Color(s)
Beige, Medium Natural Wood

Kitchen Layout
One Wall, Island

Design Style
Transitional



BEFORE



Judge's comment:

"Thoughtful and well-executed design"

COUNTERTOPS

Primary Countertop Manufacturer
Cambria

Primary Countertop Material
Quartz

APPLIANCES

Stove/Range
Thermador

Refrigerator
Thermador

Microwave
Thermador Drawer

Dishwasher
Bosch

EXTRAS

Fixtures
Delta

Lighting
Visual Comfort

Cabinet Accessories

Trash Can Pull-Out, Drawer/Cabinet Organizers, Vertical Spice Rack, Knife & Cutting Board Pull-Out, Pantry Pull-Outs, Drawer within a Drawer

JUDGES



AMY A WITTENBACH

Amy is the Director of Interiors at STG Design. A registered Interior Designer with 20 years of experience, she has been involved in multiple project types working with a diverse group of clients. Her understanding of the powerful intersections of consumer experiences and interior design provides her with unique perspectives to the Donna Figg Design team.



JULIE CAVANAUGH
CID, ASID

Julie is the Founder and Principal of Design Matters, an interior design firm known for its "Livable Luxury" approach. Originally from the Midwest and raised on the East Coast, Julie's exposure to diverse environments sparked her passion for design, leading to a long career in interior design. After earning her Interior Design degree in 1998 and CID licensure in 2002, she expanded from a sole proprietorship to open her first showroom. Today, Design Matters has five showrooms across California, Wyoming, and Utah. Julie is a respected thought leader in the design community, with multiple awards, magazine features, and appearances on radio, TV, and online forums. Her style combines form, function, and beauty in a unique way.



SHARON L. SHERMAN
CKD, ASID, NCIDQ, CID

Sharon is a Founder and Principal of Thyme & Place Design and is an award-winning designer who has been practicing luxury kitchen, bath, and interior design for the past two decades. Her focus is on creating interior environments for her clients that combine health, wellness, function, beauty, and comfort. A former past President of the New Jersey chapter of the American Society of Interior Designers, Sharon is also a member of Kitchen & Bath Business Magazine's Editorial Advisory Board, a KBB Magazine's Praiseworthy Pick in 2022 and Kitchen Bath Design News Innovator of the Year award recipient in 2022. Her award-winning designs and editorial comments have been featured in Forbes, The New York Times, The Wall Street Journal, Design Milk, Furniture Lighting & Décor, Designers Today, and more.



GARY JAY PAUL

Gary opened his studio upon receiving his Master of Architecture from Harvard University's Graduate School of Design and his Bachelor of Architecture from the Boston Architectural Center's School of Architecture. His extensive body of work ranges from new residential construction and renovations, interior and landscape design, as well as commercial design projects. Based in New York City, Gary's projects have included sites across the United States and in the Caribbean. Gary taught Architecture and Interior Design at Parsons School of Design, NYU, NYIT and at Altos de Chavon, in the Dominican Republic. Gary has been a guest critic at Harvard, Yale, University of Illinois in Chicago and City College of New York, Schools of Architecture.



SANDRA DIAZ-VELASCO
AIA, ASID, IIDA

Sandra Diaz-Velasco is an internationally recognized architect and interior designer and the founder of the award-winning design firm, Eolo A&I Design in Miami, Florida. She is AIA, ASID, and LEED BD+C certified, with extensive experience in high end residential, commercial, and hospitality projects across the United States and Latin America. Sandra's designs have been showcased by Architectural Digest, Florida Design, Modern Luxury, Haute Living and Luxe magazines, among others. Her numerous personal awards, career as a speaker at national design events, and role as a judge in competitions have positioned her as a leading visionary in South Florida's design community.



KITCHEN CABINET MANUFACTURERS ASSOCIATION

1768 Business Center Drive

Suite 390

Reston, VA 20190

(703) 264-1690

kcma.org